

East-West and Beyond to a Sustainable Future



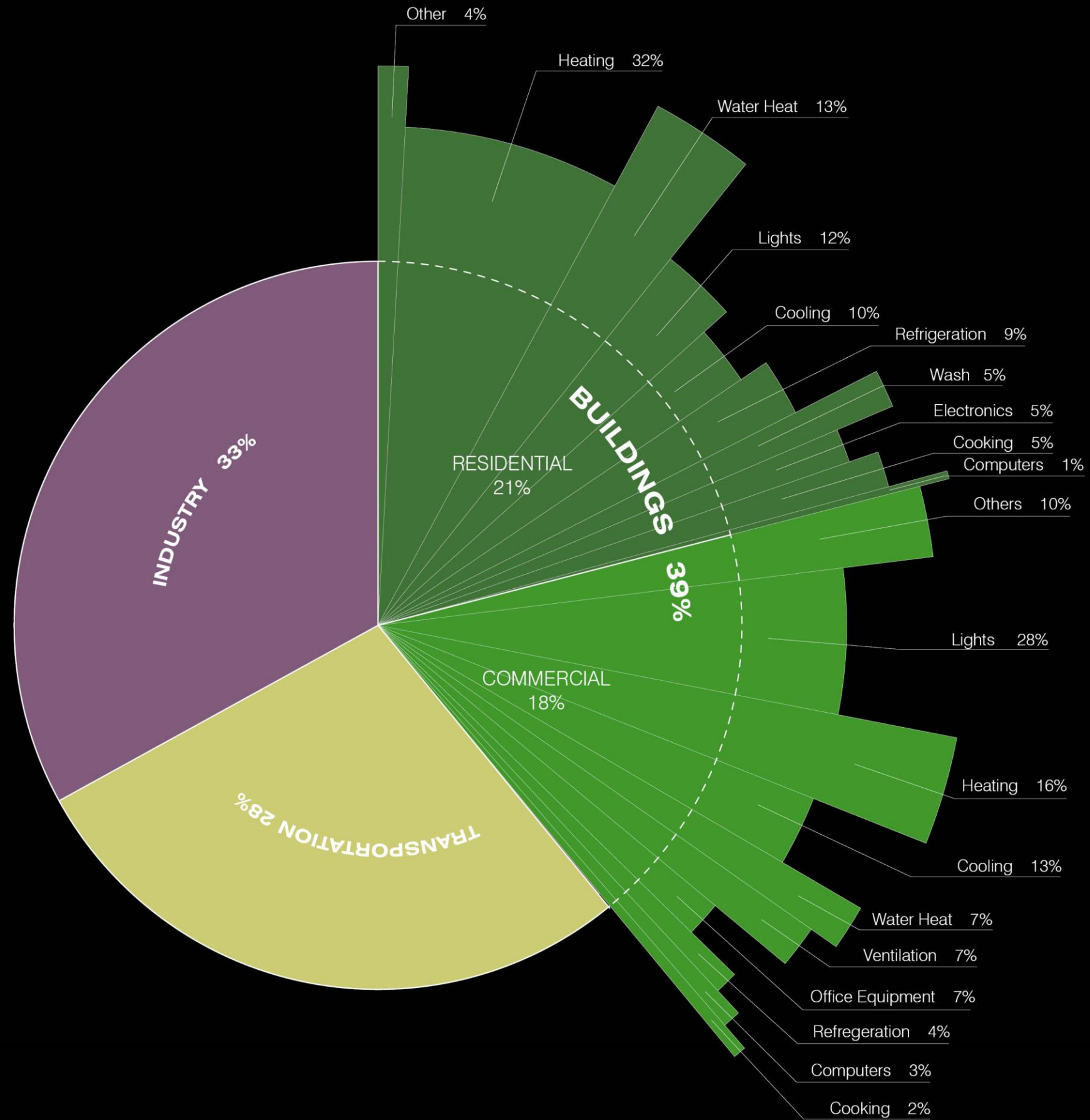
Shanghai,
China

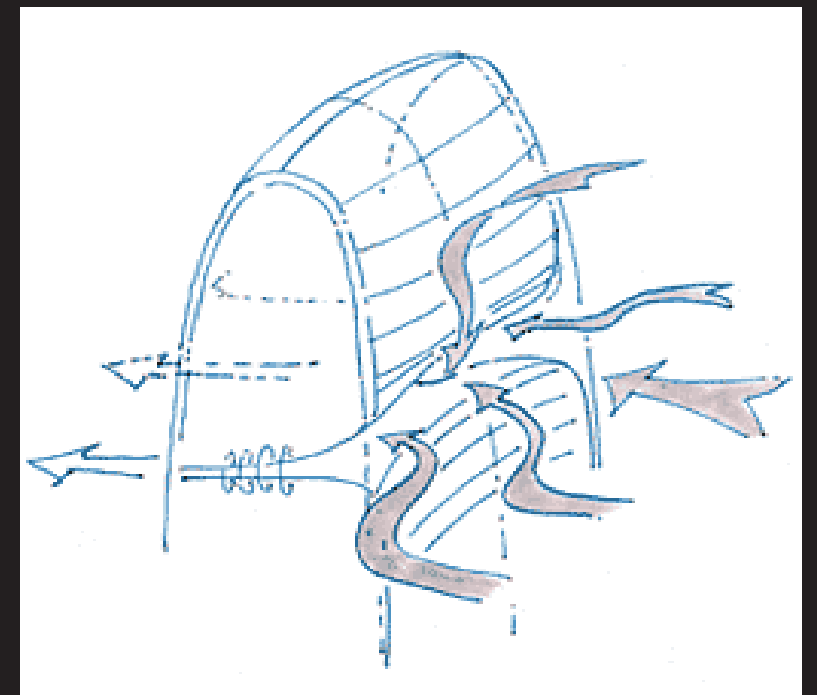
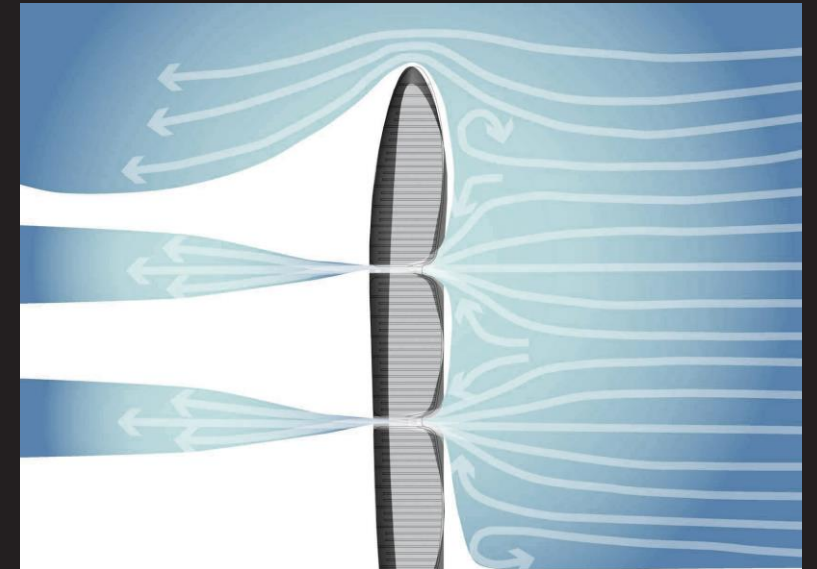


Old Chinese Family
Photo



Paris,
France





“Net-Zero“ building, Pearl River Tower,
Guangzhou



Residential buildings were demolished less than one year of completion, Taizhou, Zhejiang



Haikou _ Dec. 25,
2012



Nanchang _ Feb. 6,
2010



Wenzhou _ May 18,
2005



Hefei _ Dec. 10,
2005



Shenyang _ Feb. 20,
2009



Hangzhou _ Jan. 06,
2007



Empire State Building, New York, NY
_ 1940



Empire State Building in Guilin



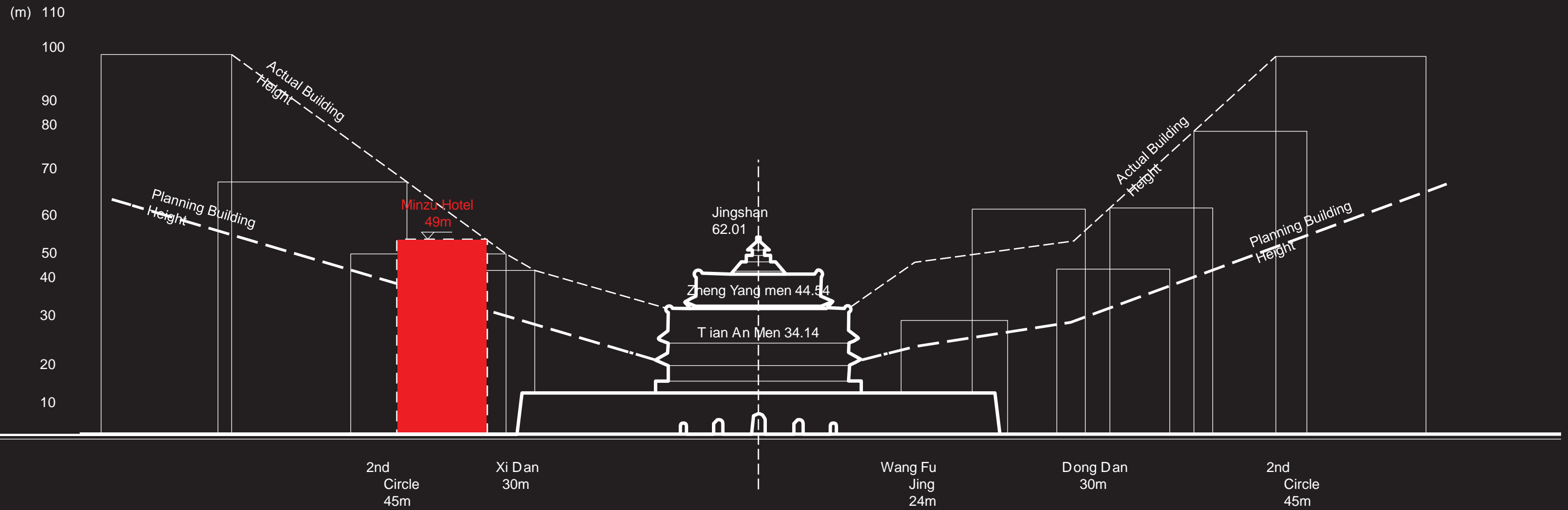
Empire State Building in Rural



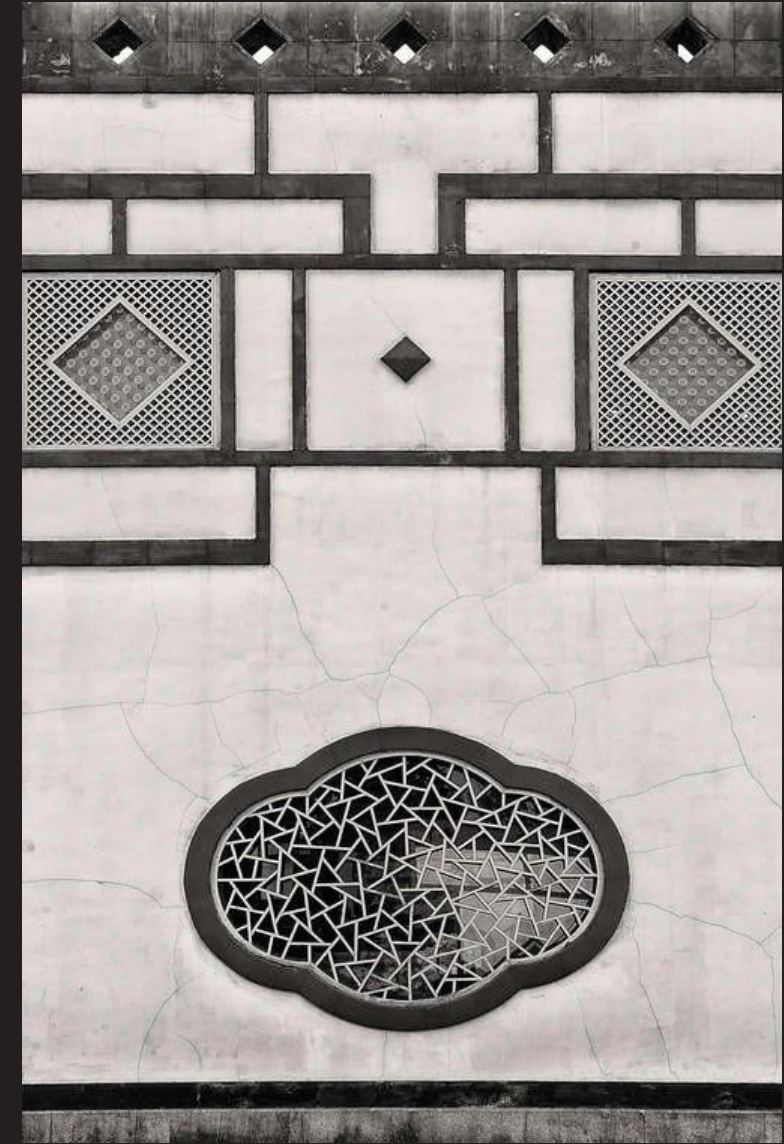
Forbidden City,
Beijing



Minzu Hotel, Beijing _
1959



Beijing Height Regulation around
Forbidden City



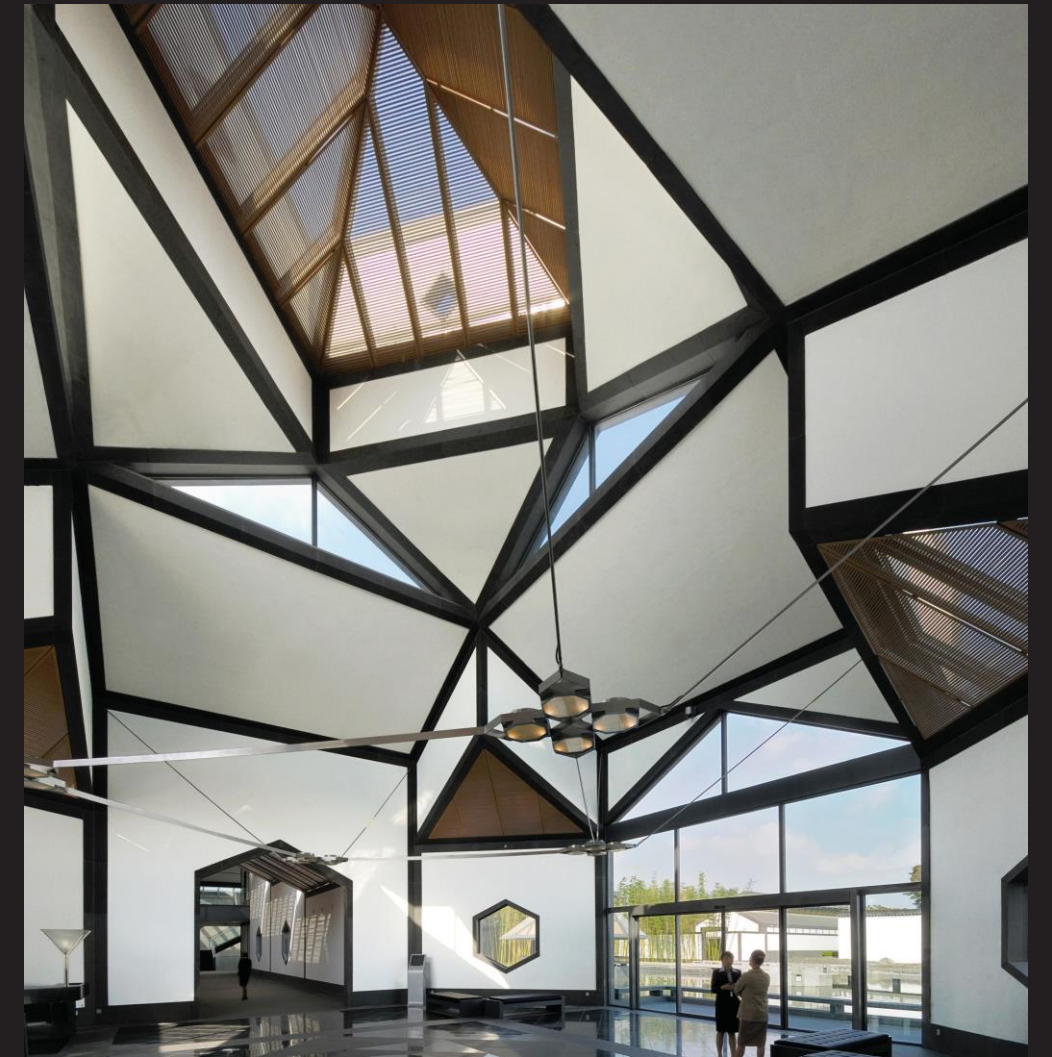
Fragrant Hill Hotel, Beijing _
1978-1982



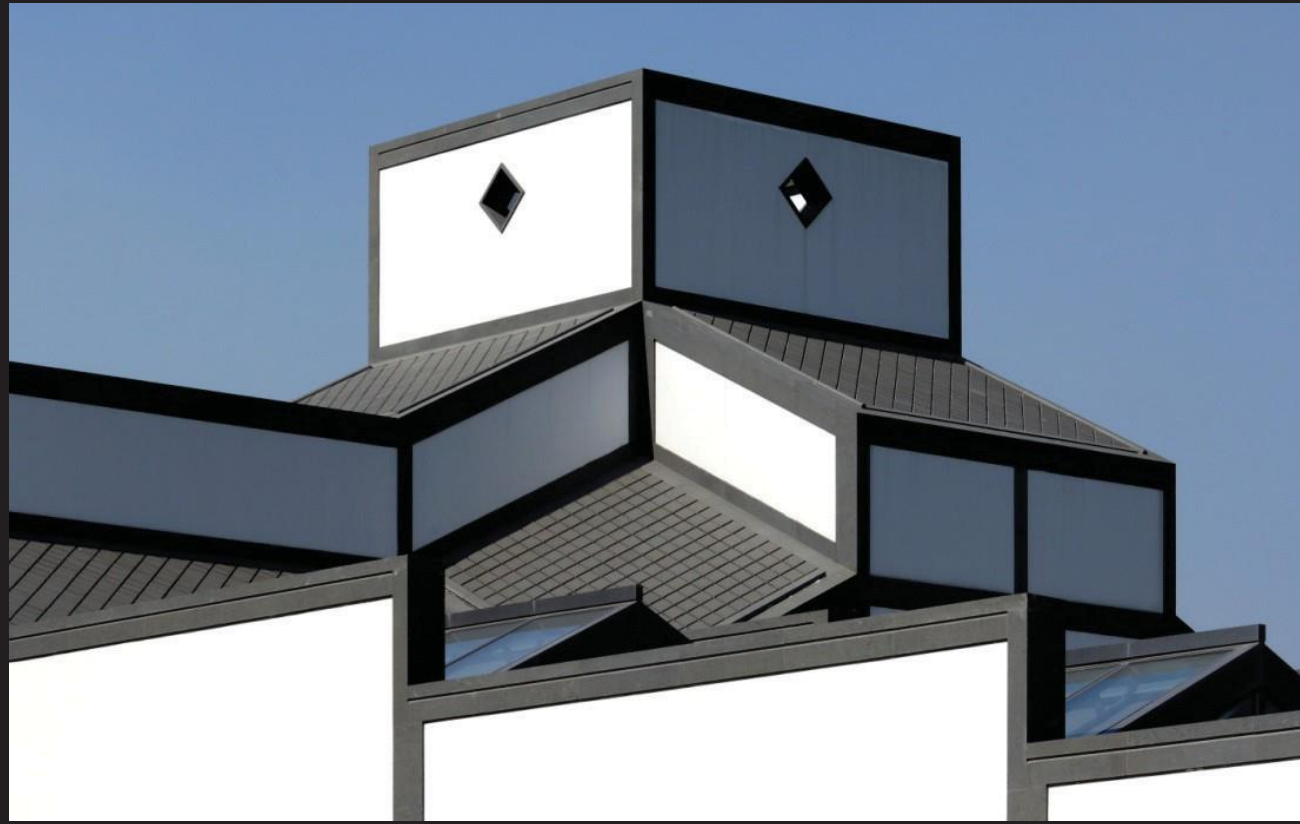
Fragrant Hill Hotel, Beijing _
1978-1982



Suzhou Museum, Suzhou, Jiangsu _
2002-2006



Suzhou Museum, Suzhou, Jiangsu _
2002-2006



Suzhou Museum, Suzhou, Jiangsu _
2002-2006



I.M. Pei _
1978



Sun Yat-sen Mausoleum Music Stage, Nanjing _
Tingbao Yang



“The world’s largest building”, Global Center, Chengdu



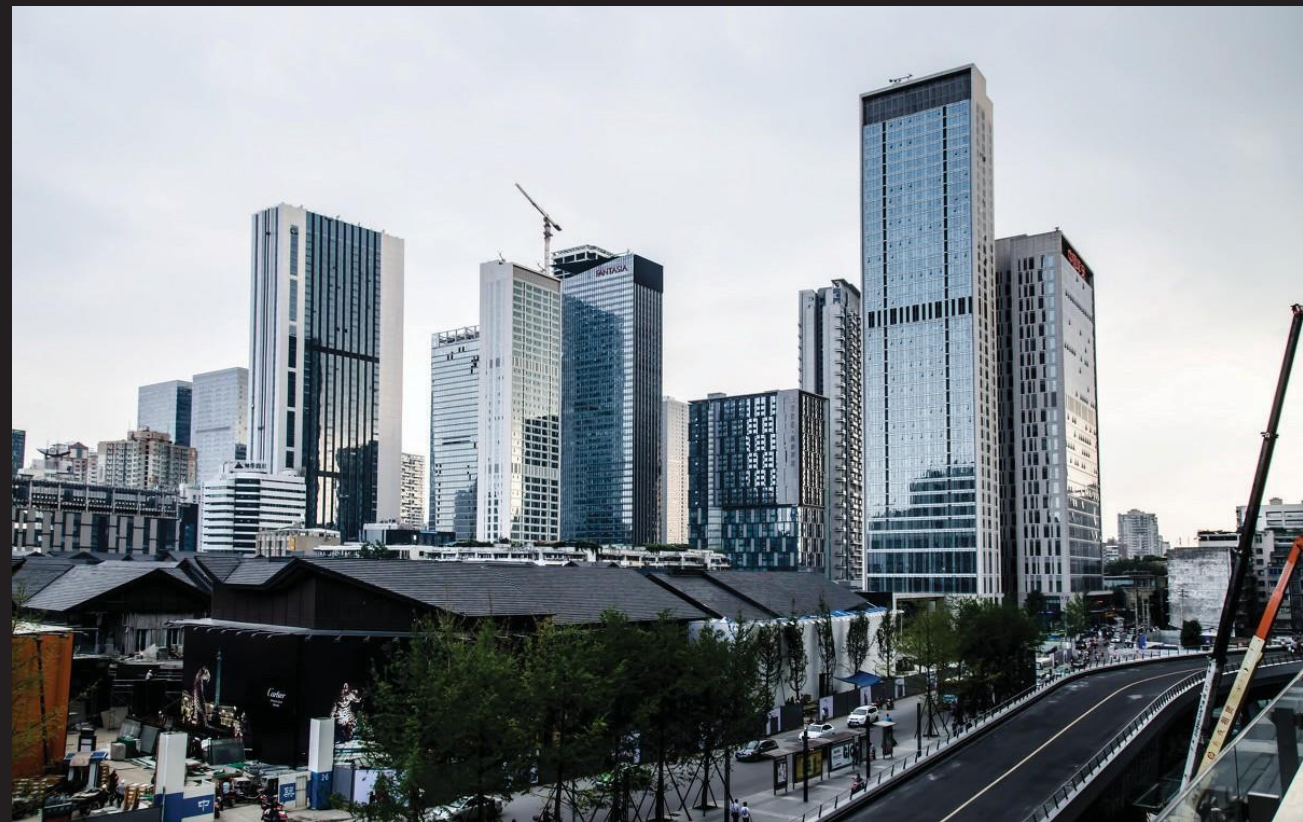
A large advertisement in Tianjin, China, shows the future aerial view of a planned financial district there



Nanjing Huijing Center



Tianjing "Wall Street"



Chongqing International Finance Square

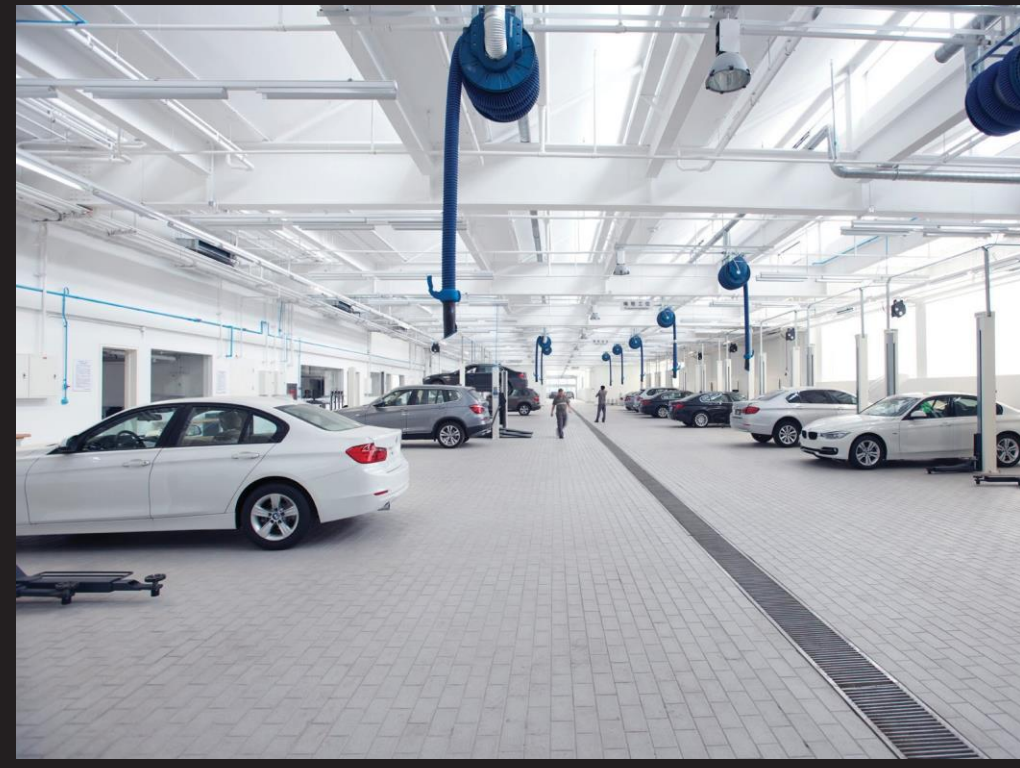


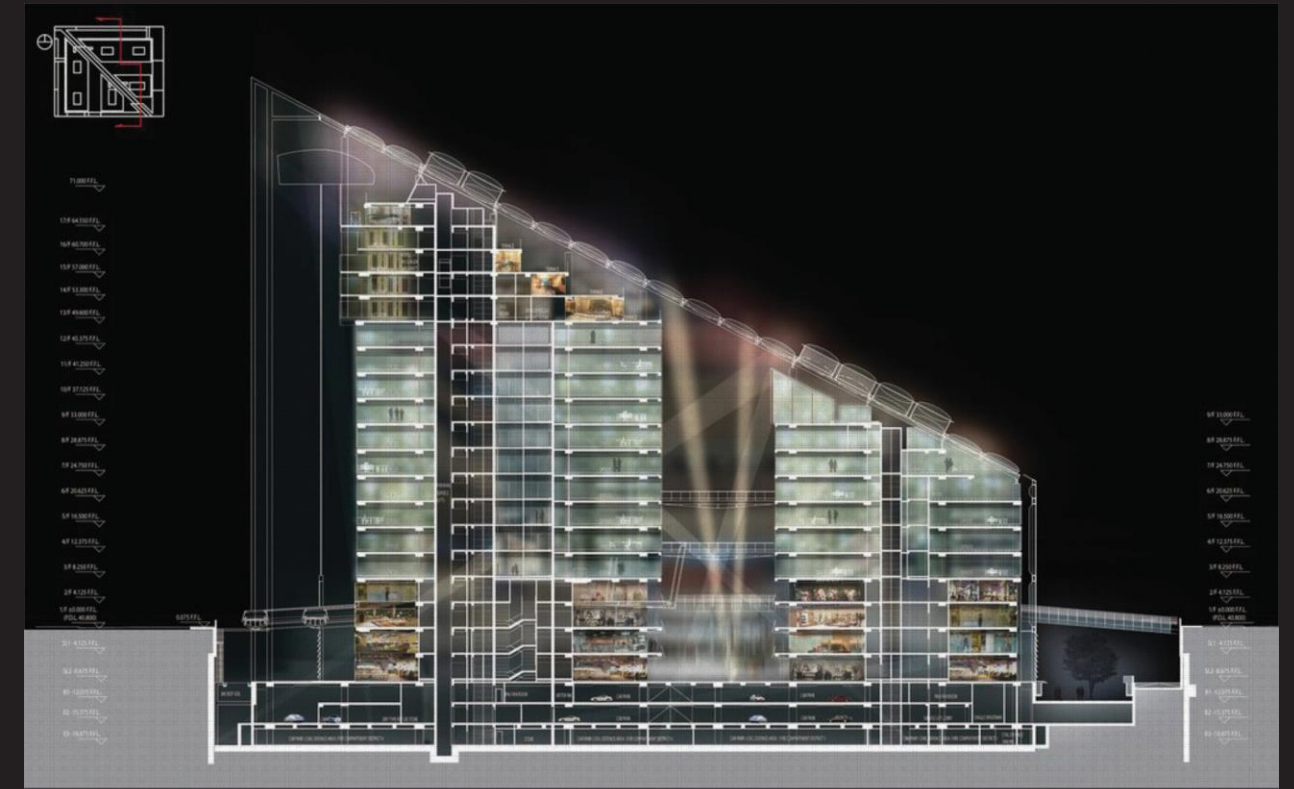
Guiyang Central Business District



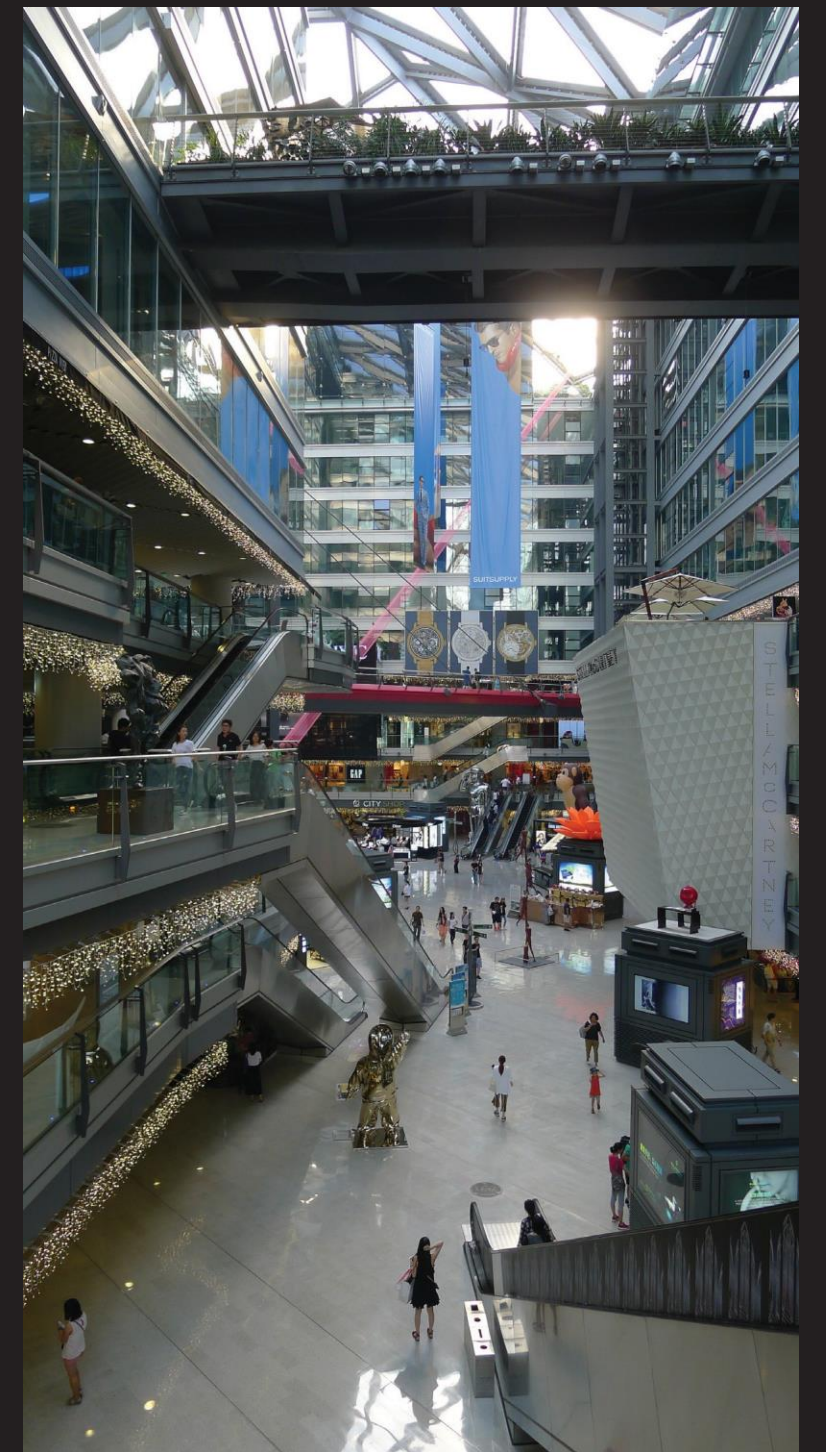
BMW Green Dealership, Beijing _ Pei Partnership Architects (PPA)
_ 2011-2014



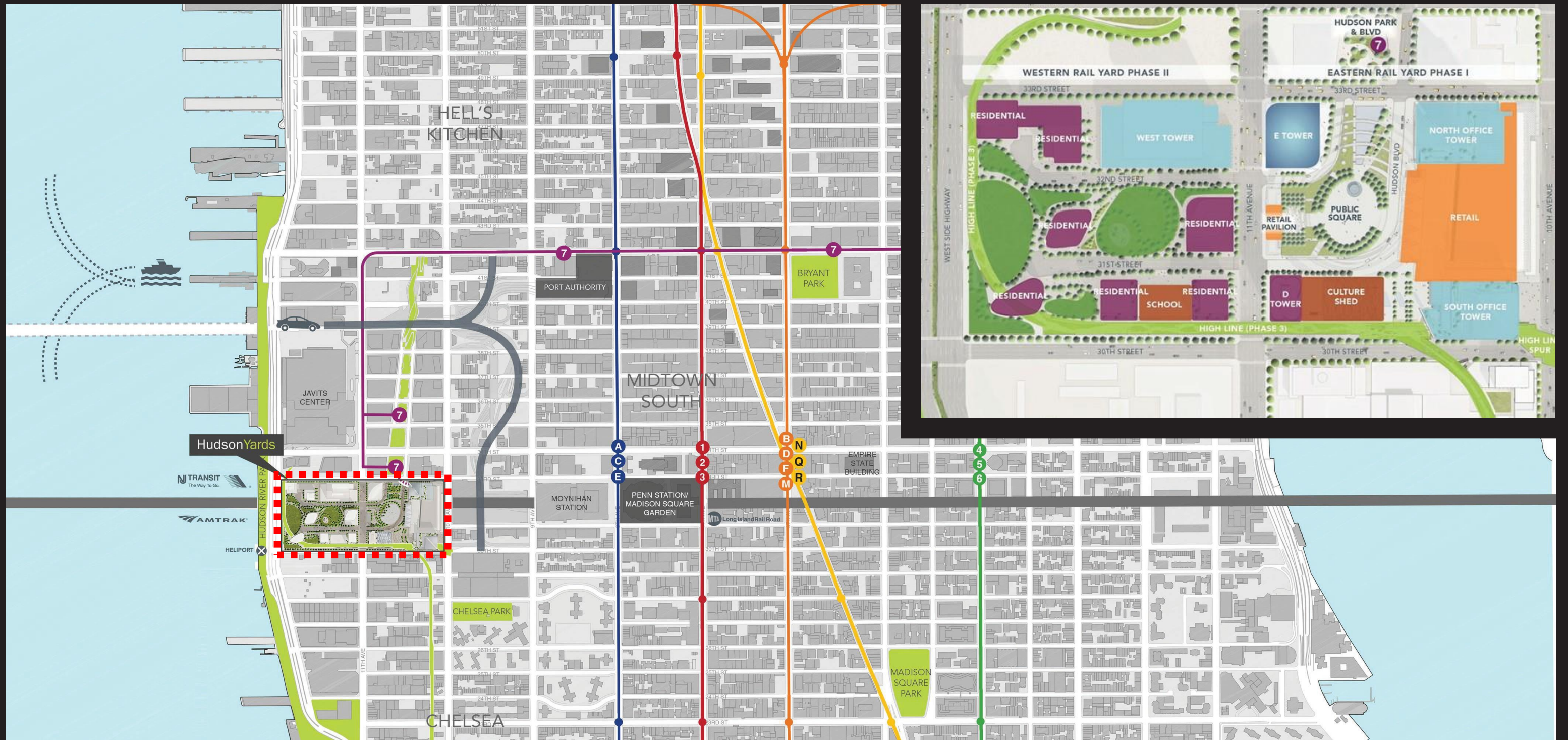




Parkview Green,
Beijing



Parkview Green,
Beijing



Hudson Yard, New York, NY



Hudson Yard, New
York, NY



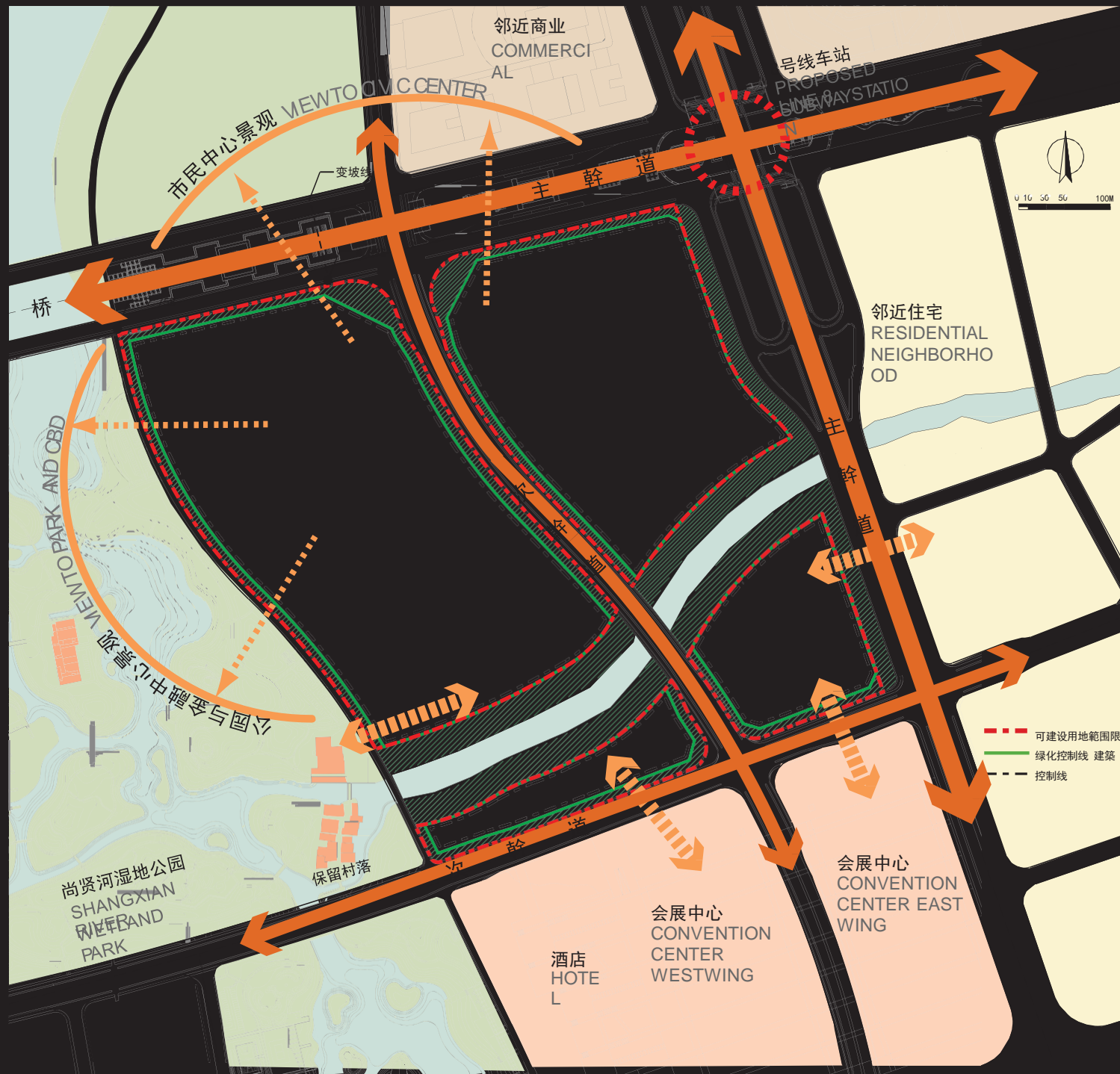
Hudson Yard, New York, NY



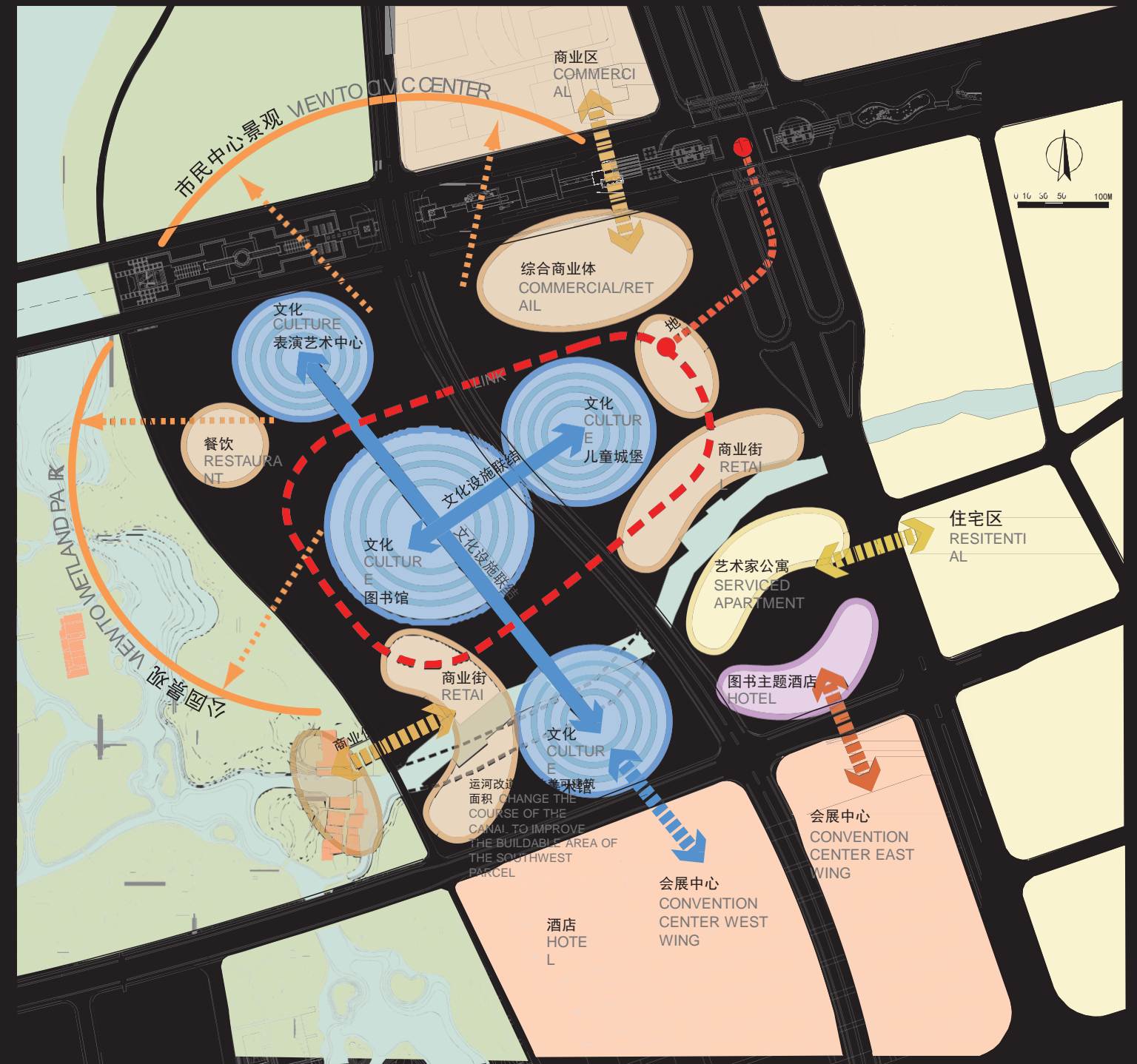
Civic Center
市民中心

CBD
中心商务区

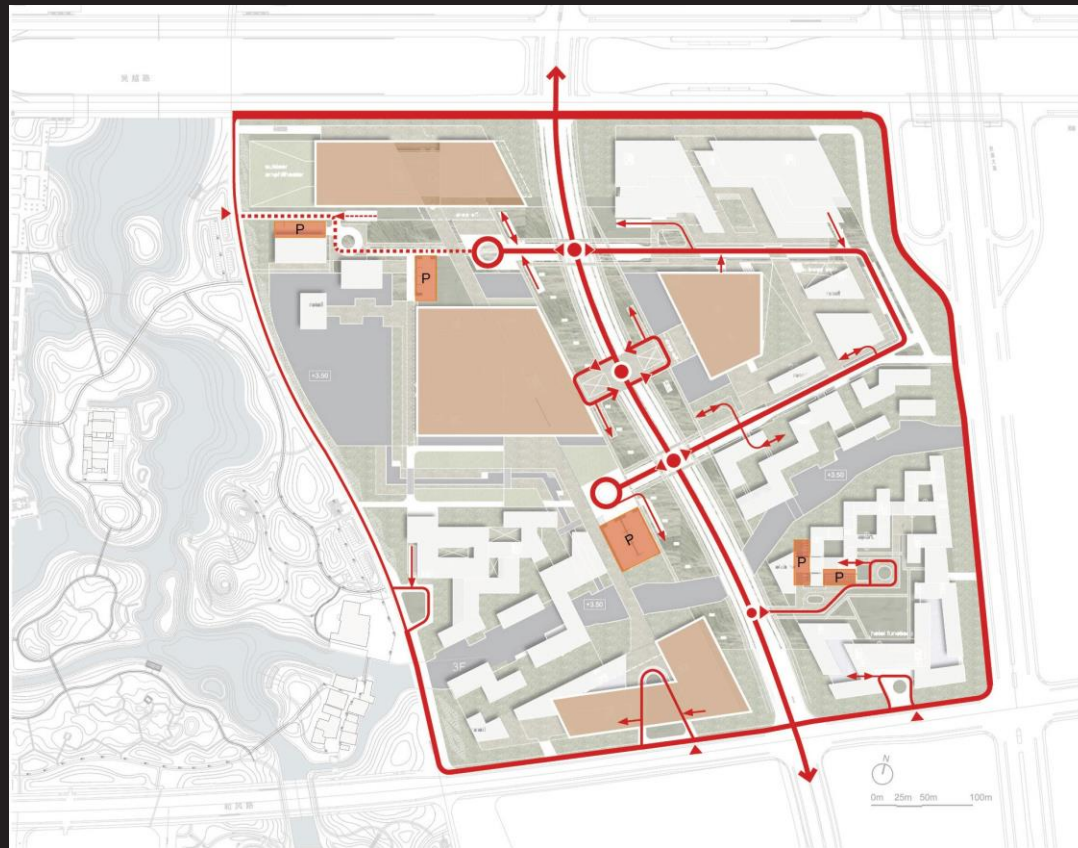
Poly Culture Center
保利文化广场



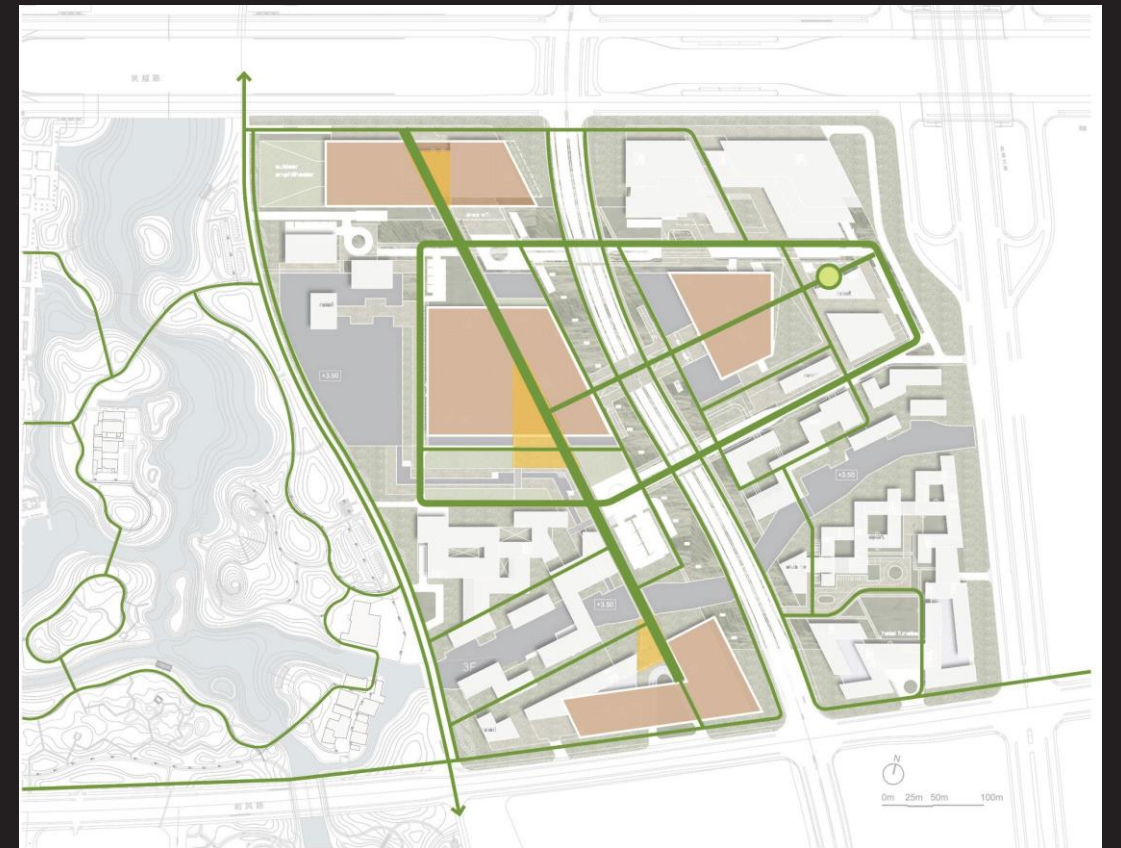
SWOT (Strength, Weakness, Opportunity and Threat) Analysis



Adjacency Analysis



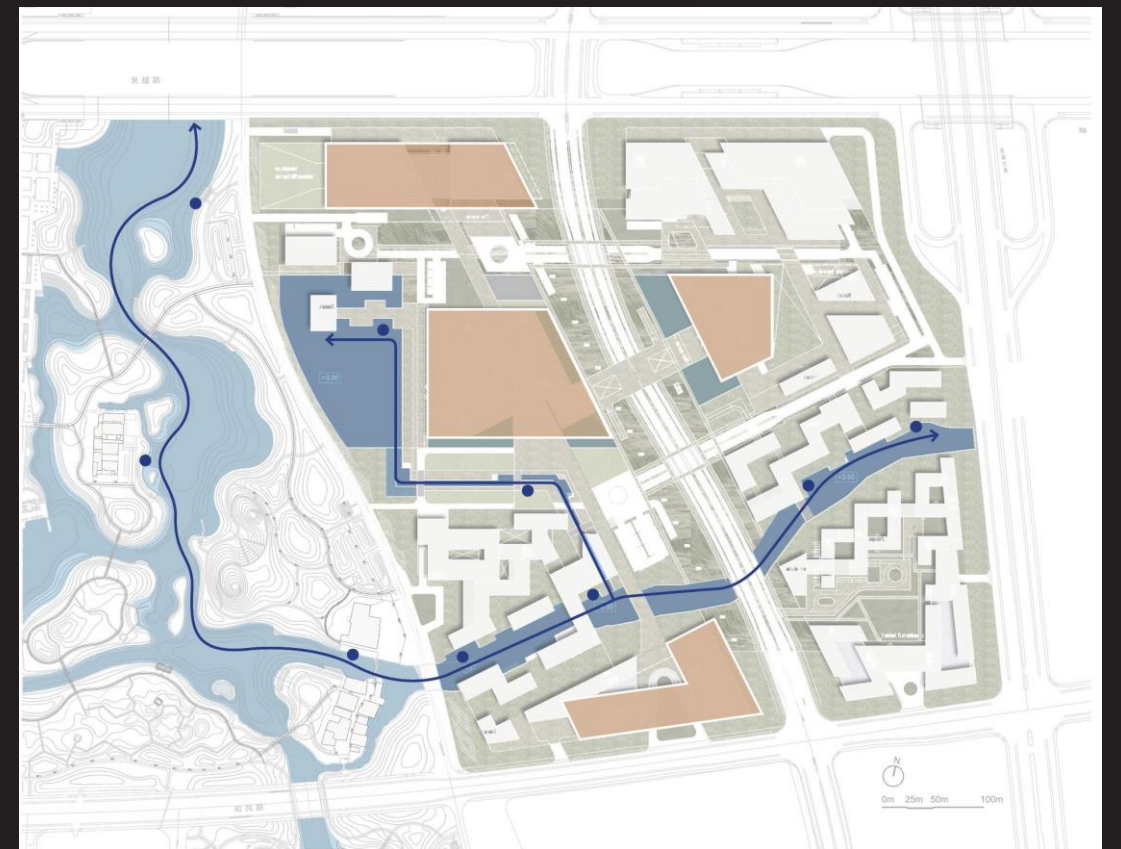
Vehicular
Circulation



Pedestrian Circulation and Subway
Entrance

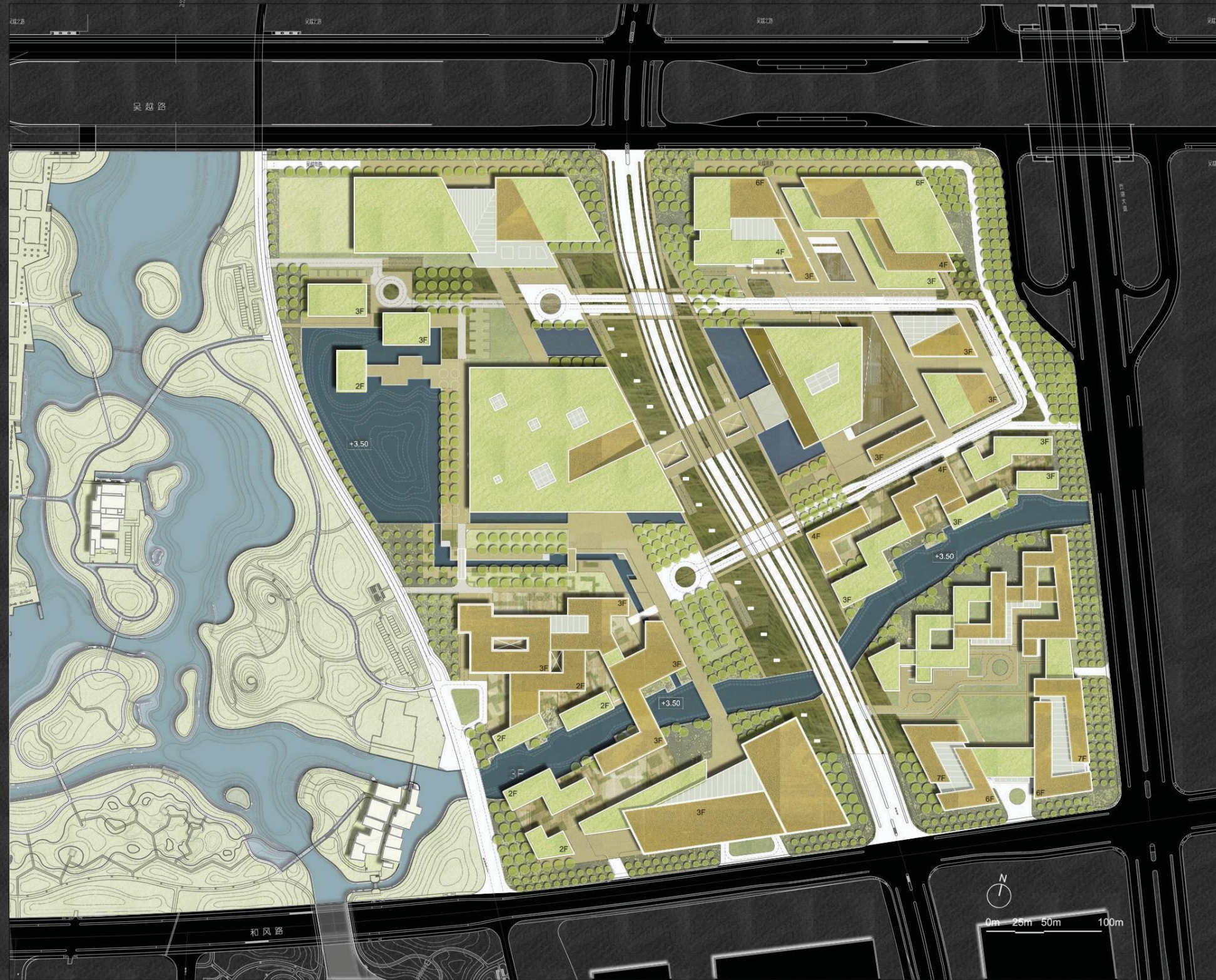


Bicycle Path
Analysis



Water Access
Circulation

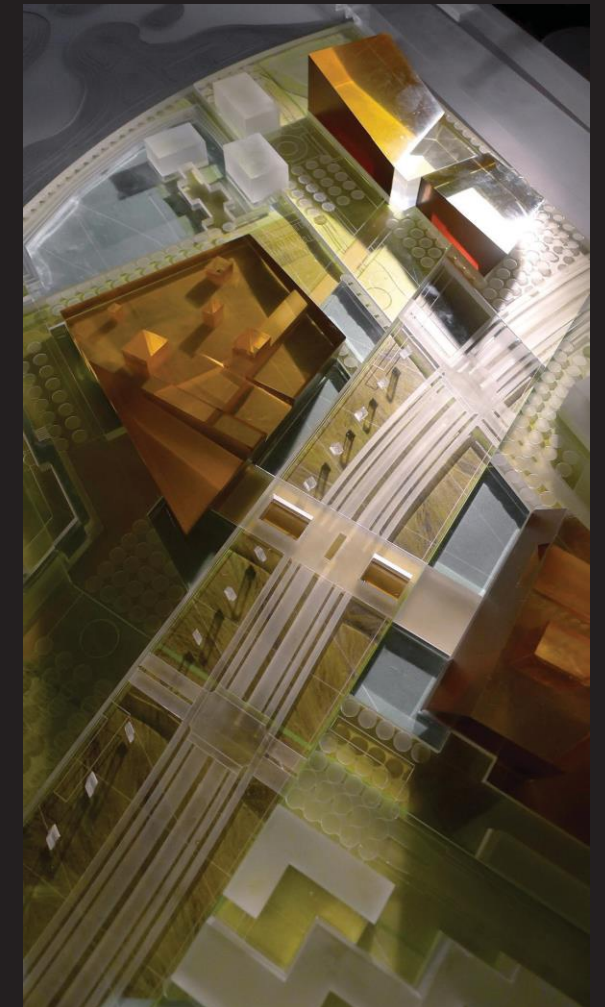
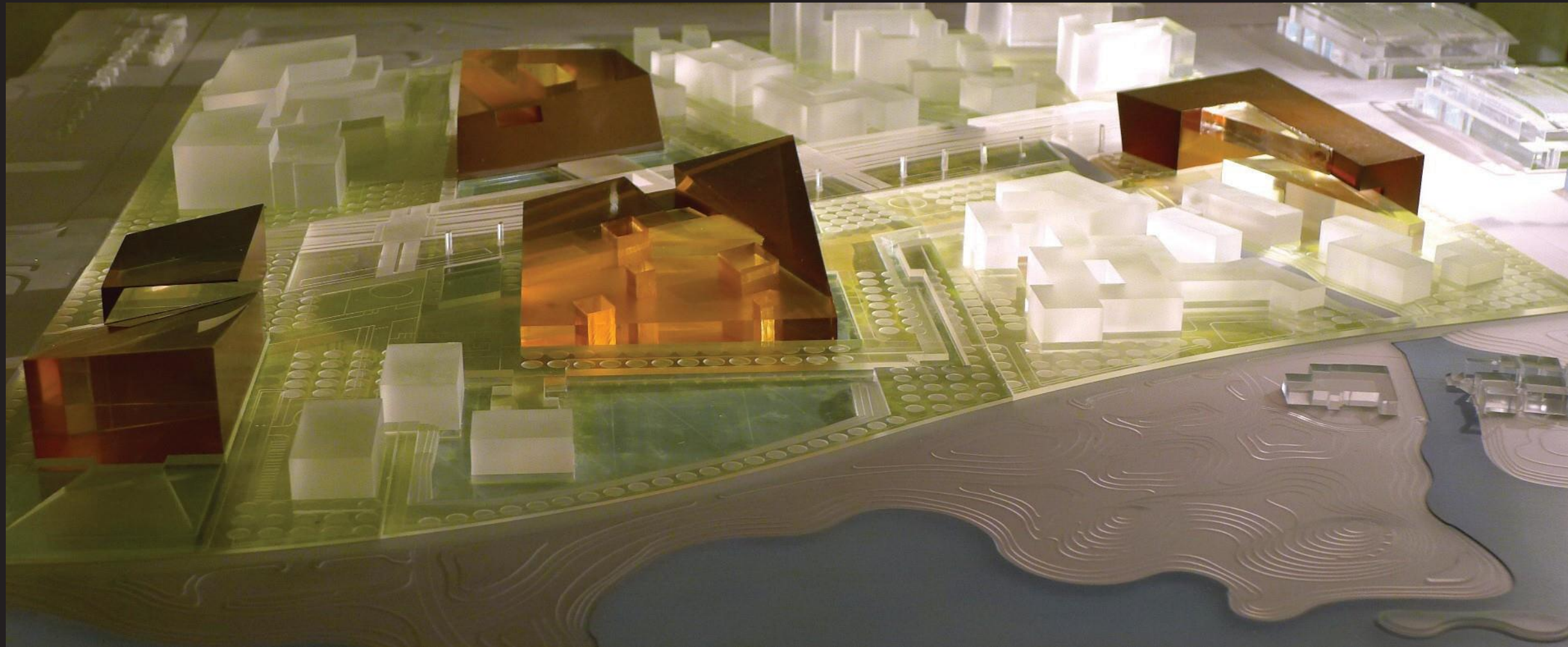
- ▲ 车行入口
car entrance
- 车行动线
car circulation
- P 停车位
parking
- 入地库坡道(单向通行)
ramp
- ↔ 入地库坡道(双向通行)
ramp
- 步行广场
plaza
- 人行动线
pedestrian circulation
- 地铁出入口
subway access
- ⋯ 自行车停车位
bicycle parking
- 自行车动线
bicycle circulation
- 游船线路
boat circulation
- 游船码头
boat wharf



- Outdoor Theater
户外剧场
- Art and Performance Center
演艺中心
- Arrival Plaza
演艺中心到达广场
- Retail
商业及餐饮
- Circle Turnaround
车道转盘
- Landscape Lake
景观湖面
- Landscape Light Post
景观灯柱
- 3D Library
3D 图书馆
- Central Arrival Plaza
中心到达广场
- Boat Channel
人工航道
- Retail Arrival Plaza
商业街到达广场
- Retail
商业街
- Retail Arrival Plaza
商业街到达广场
- Riverside Commercial Street
滨水商业空间
- Museum Courtyard
博物馆中庭广场
- Reserved Buildings
保留建筑
- Museum
博物馆
- Museum Arrival Plaza
博物馆到达广场



- Shopping Mall
购物广场
- Sunken Plaza
下沉商业广场
- Arrival Plaza
落客区到达广场
- Metro Sunken Plaza
地铁出入口下沉广场
- Sunken Plaza
下沉广场
- Children's Castle
儿童城堡
- Reflective Pool
景观反射池
- Tree Rows
树阵广场
- Retail Courts
休闲庭院
- Nanda River
南大港
- Apartments
公寓
- Clubhouse
俱乐部
- Hotel Courtyard
酒店景观庭院
- Hotel Lobby
酒店大堂
- Hotel Arrival Plaza
酒店到达广场
- Central Open Space
中央开放空间



PHYSICAL MODEL _ Wuxi Taihu New City-Poly Cultural Center Master Plan, Wuxi, Jiangsu _ Pei Partnership Architects (PPA) _ 2014

