



ESQUEL GROUP

# **2015 Integral Conversation**

## **– Clothing, Sustainable Fashion**

Queenie Huang  
*Managing Director, General Management Office*

- Environmental Impact
- Care & Development in People
- Product
- Community

Create a revolutionary business model that puts product, nature, industry and people in harmony.

- Successful Manufacturing Transformation
- Employer of Choice
- Sustainable Fashion
- Harmonious with Nature
- Contribution to The Society

# Esquel's Sustainability Performance

A RECORD

# 110 MILLION

SHIRTS WERE PRODUCED BY ESQUEL IN 2014

## ECONOMIC

A YEAR-ON-YEAR INCREASE OF

# 6%

IN SALES WAS ACHIEVED IN 2014

THE GROUP MARKED

# US\$1,398 MILLION

IN REVENUES FOR 2014

## ENVIRONMENTAL

WE REDUCED OUR GLOBAL  
ENERGY CONSUMPTION PER UNIT  
OF PRODUCTION BY

# 20%

BETWEEN 2010 AND 2014

# 26%

REDUCTION IN WATER USE PER UNIT OF  
PRODUCTION FROM 2010-2014

## SOCIAL

# 373,856 HOURS

OF TRAINING WAS UNDERTAKEN ACROSS  
OUR GLOBAL WORKFORCE IN 2014

AVERAGE PRODUCTIVITY ROSE BY

# 7%

DURING 2014, THANKS TO THE  
CONTINUOUS IMPROVEMENT IN  
TECHNOLOGY AND PEOPLE SKILLS

# Clothing – Sustainable fashion

## Successful Manufacturing Transformation

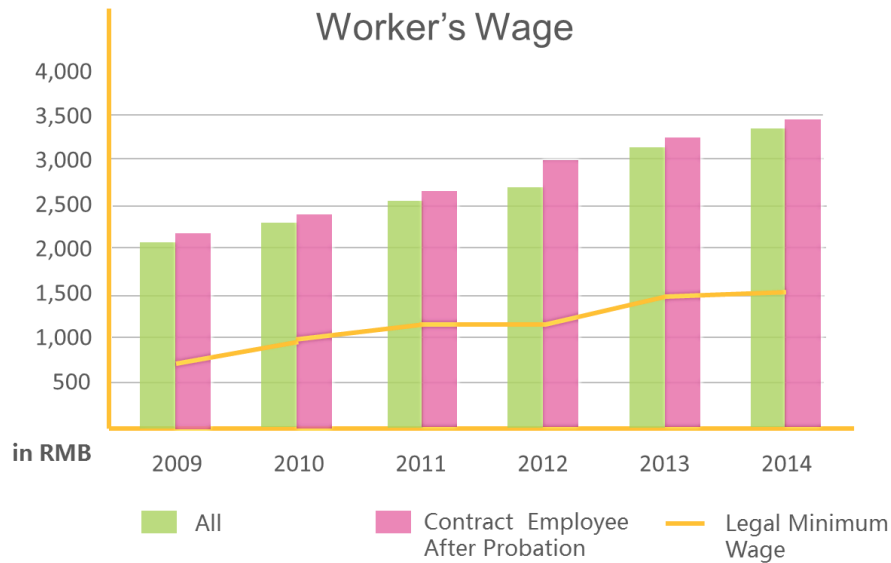
Utilize Technology & Modern Manufacturing Management Systems to Enhance Operating Efficiency



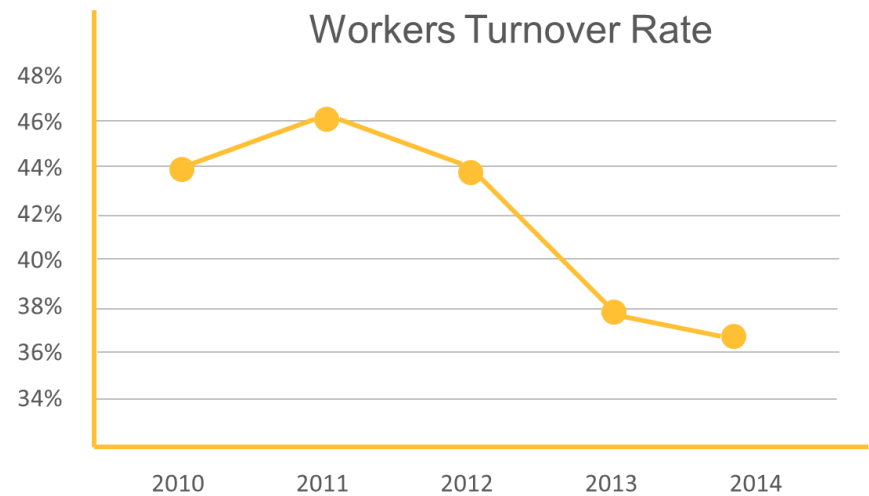
# Clothing – Sustainable fashion

# Employer of Choice

As a result of productivity improvement, workers' take home pay, job satisfaction, quality of life are also improved. We are becoming The employer of Choice.



\*Data from Guangdong Esquel Textiles Company Limited, Esquel Group



\*Data from Guangdong Esquel Textiles Company Limited, Esquel Group



# Clothing – Sustainable fashion

# Employer of Choice

We are taking care of our employee from all aspect, living, family, growth, career development.



Living Compound



Hing Hing Kindergarten



Group Wedding



Training & Development



E-learning



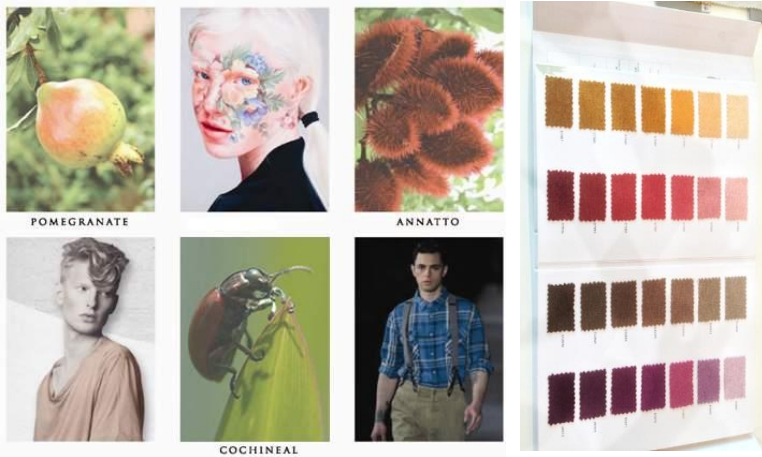
Year 2015  
6th Asia Best  
Employer Brand  
Awards



# Clothing – Sustainable fashion

## Sustainable Fashion

### Natural Dye



### Bleach No Dye



### Recycled Cotton



### Cotton Yak





# Clothing – Sustainable fashion

## Minimize the Environment Impact

Esquel Thermal Power Plant



Esquel Effluent Water Treatment Center



Green Wash



Solar Power



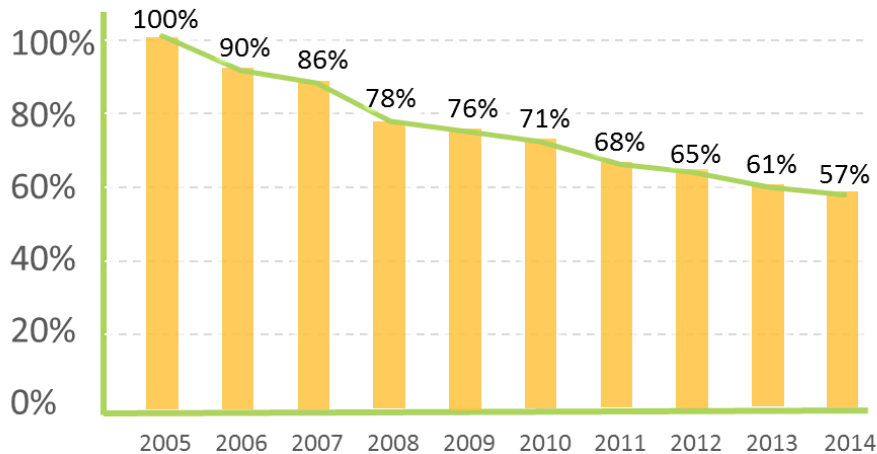
Low-Energy Factory and Office



# Clothing – Sustainable fashion

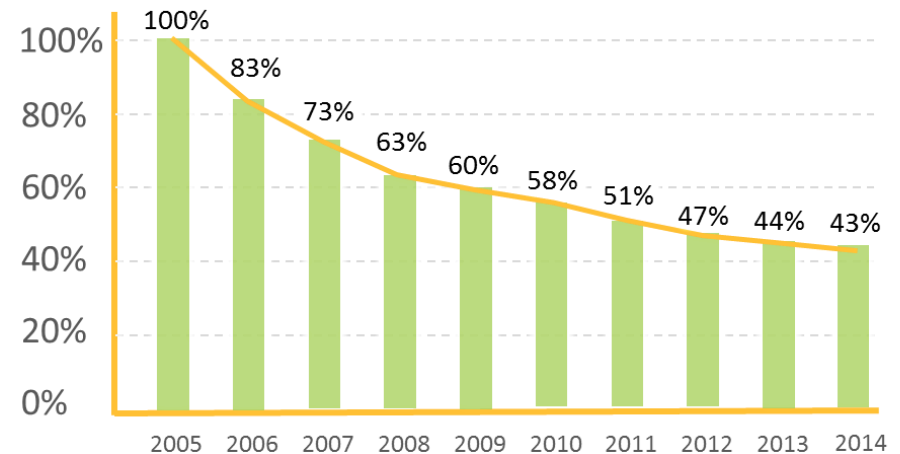
## Minimize The Environment Impact

### Energy Consumption Reduced Per Piece of production



From 2005 to 2014, energy consumption per piece of production reduced by **43%**.

### Water Consumption Reduced Per Piece of Shirt



From 2005 to 2014, water consumption per piece of production reduced by **57%**.



# Clothing – Sustainable fashion

# Contribution to The Society



溢达杨元龙教育基金  
Esquel - Y. L. Yang Education Foundation



**Clothing –  
Sustainable fashion**

**Harmonious with Nature**



ESQUEL GROUP

# Thank you.

This presentation contains confidential, proprietary and/or legally privileged information. None of the material may be disclosed, distributed, printed, or copied without the authorization of Esquel Enterprises Limited. Unauthorized use of this presentation, in whole or in part, may result in legal action. Requests for use of this material may be directed to: General Management Office, Esquel Enterprises Limited, 12th Floor, Harbour Centre, 25 Harbour Road, Wanchai, Hong Kong.



ESQUEL GROUP

# Clothing – Sustainable fashion

## Esquel's Framework for product sustainability

		Product life –cycle stages			
		Pre-manufacturing	Manufacturing	Use	Post-use
Sustainability Focus	Environmental	Help to preserve nature resource & species diversity, good for planet in raw material planting & processing	Reduces energy consumption, emission & pollution; Promotes the use of renewable resource	Design for functionality & durability; Less resources are required	Conducts waste treatment; Ecologically-friendly
	Social	Promotes ethical practices & consciousness to preserve the environmental; Preserves culture diversity	Aimed at enhancing public health & welfare; Considers ergonomics & worker's safety	Promotes social awareness	Easy for recycling, remanufacturing and recovery
	Economic	Improves energy efficiency; Reduces cost and improves material utilization	Reduces cost spent on energy consumption; Eliminates the use of package or processing; Increase material utilization	Durability, lower costs, energy saving	Controls recycling & disposal costs; Develops renewable resources' value

